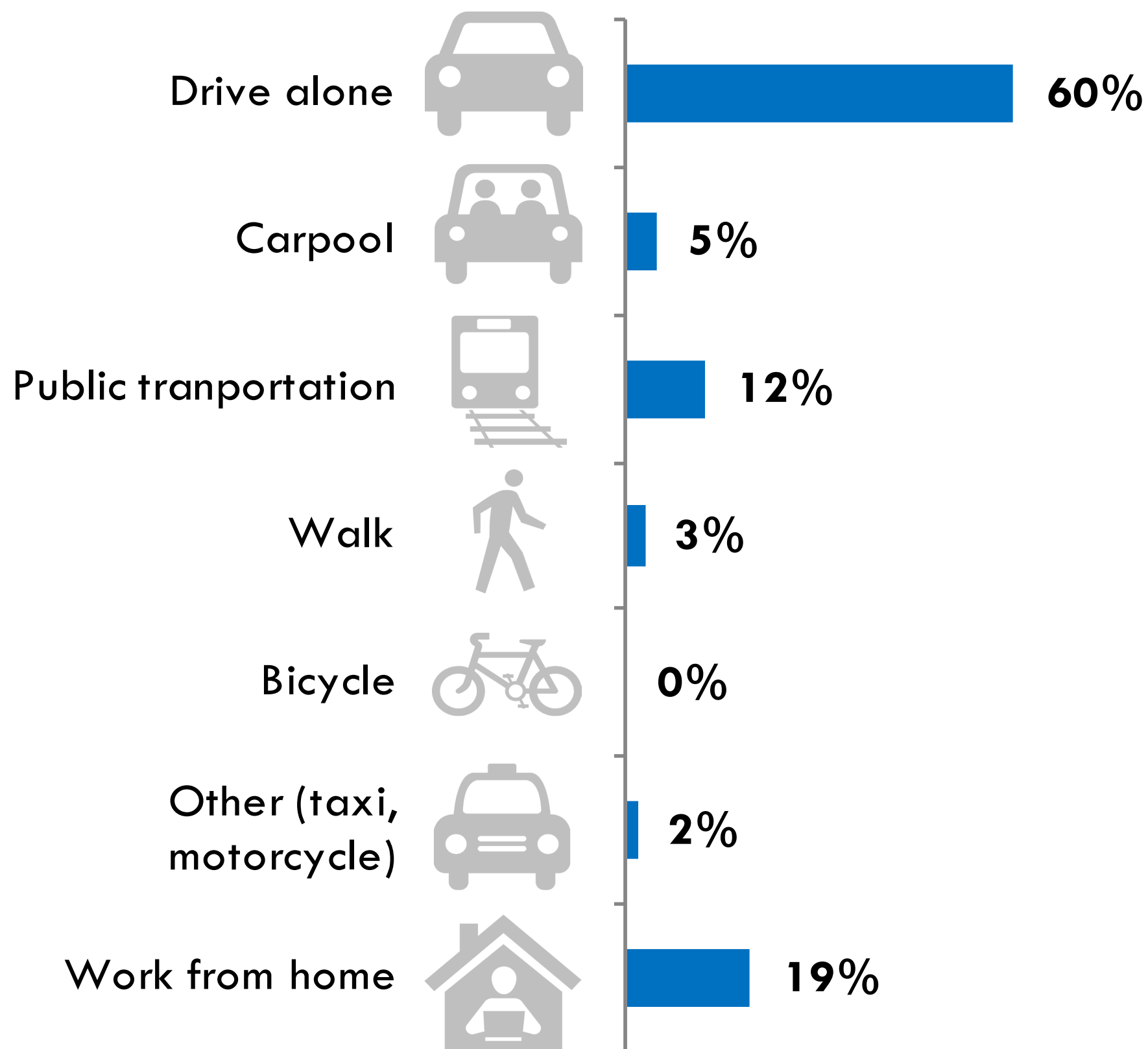


TRANSPORTATION

Commute to Work

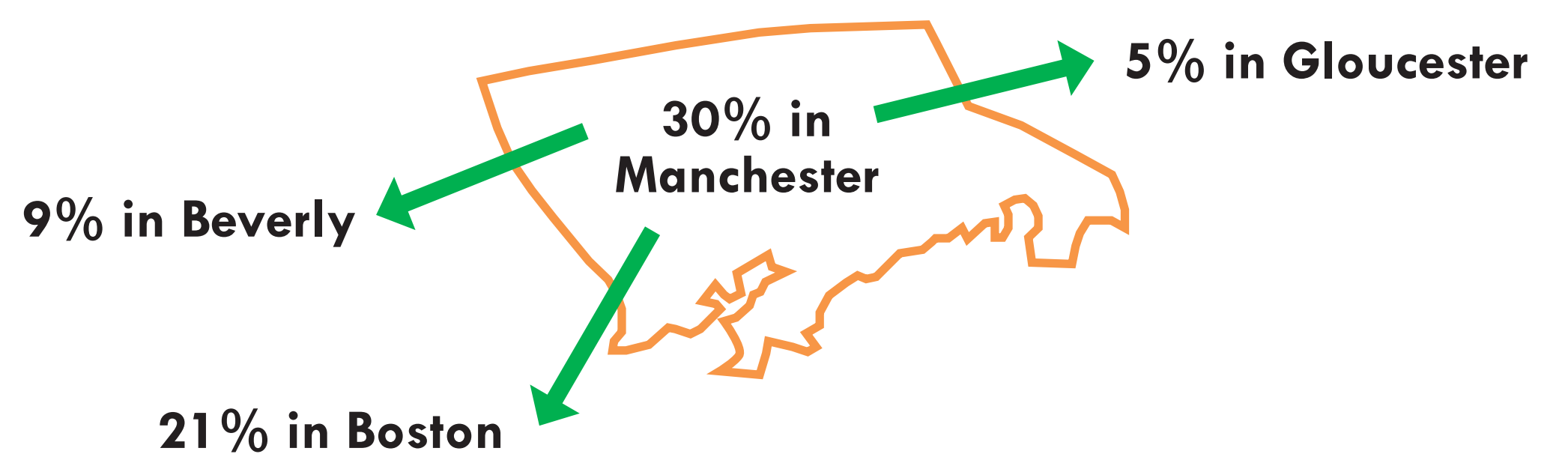


Almost two-thirds of Manchester-by-the-Sea residents drive alone to work. About 19% work from home and 12% take public transportation.

There are, on average, 307 inbound daily riders on the Newburyport/Rockport Commuter Rail Line who get on at the Manchester station.

The mean travel time to work for Manchester-by-the-Sea residents is 35.4 minutes, compared to 28.5 minutes for all Essex County residents.

Manchester-by-the-Sea residents primarily work in town, in Boston, or in neighboring North Shore communities.



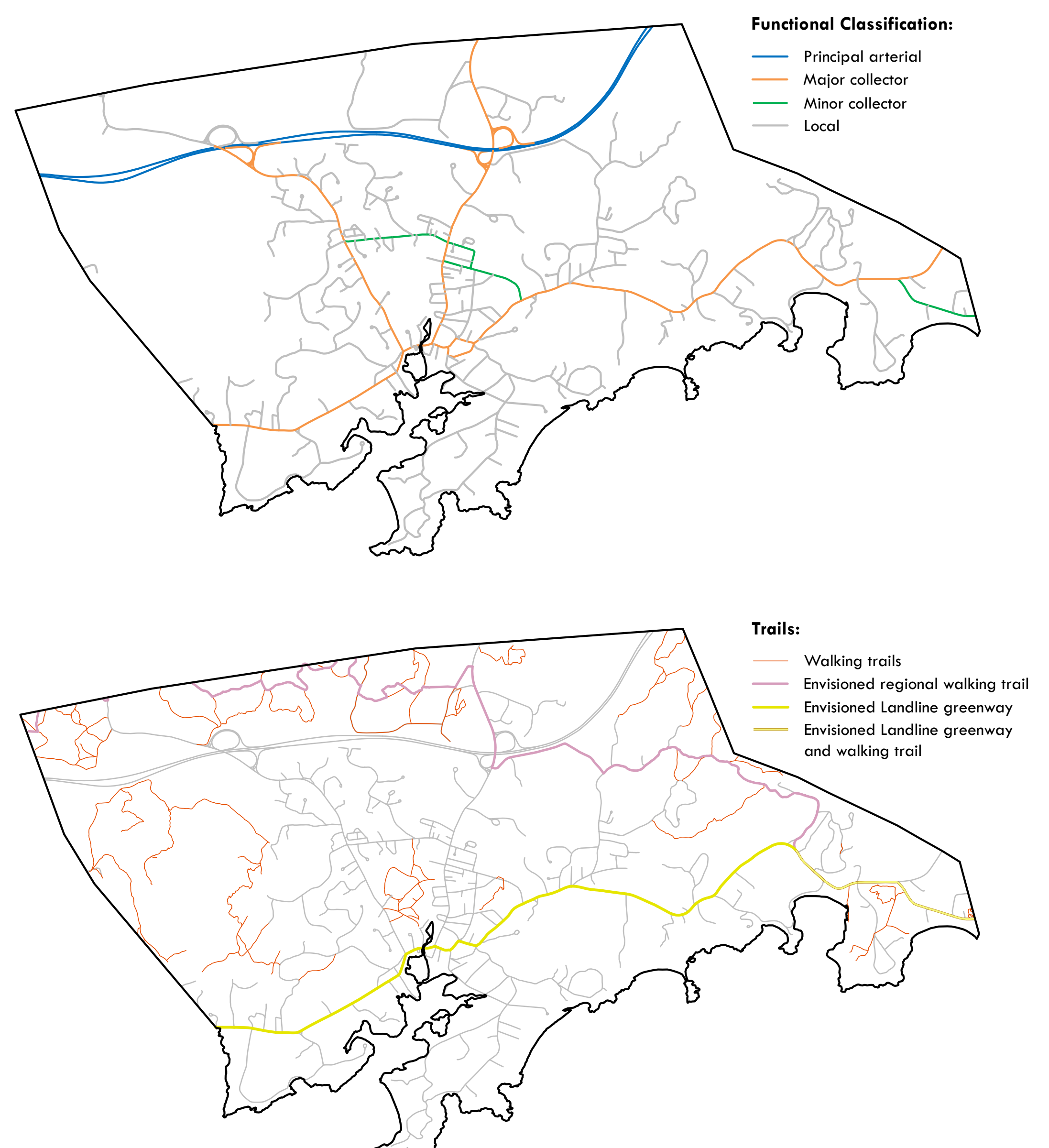
Source: ACS 2014 5-Year Estimates, ACS 2010 5-Year Estimates MCD Flows, MBTA Blue Book 2014

Getting Around Town

On average, there are 1.84 vehicles per Manchester-by-the-Sea household, compared to 1.53 for all Massachusetts households.

The majority of the town's roads (68%) are local roadways, 20% are minor and major collectors which connect the local roads to the arterial network, and 12% are principal arterials, roadways which generally connect cities and towns and allow for higher speeds.

Manchester-by-the-Sea has a number of local walking trails. A North Shore greenway with bike and pedestrian facilities as well as a Cape Ann regional walking trail are envisioned for the area.



Source: ACS 2014 5-Year Estimates, MAPC, MassDOT 2014